

QuietSwing™  
Door Installation Manual



3'0" x 7'0" STC 50 Door w/Full Glass, Pull  
Handle, Schlage Deadbolt Lock, LCN Closer

## Contents

Greetings/Required Tools .....	2
Dear Customer, .....	2
Required tools:.....	2
Hardware Included: .....	2
Important Installation Instructions.....	2
Receipt: .....	2
Approval Drawings:.....	3
Uncrating:.....	3
Installation .....	3
Preparation: .....	3
Installing Frame:.....	4
Mounting Door:.....	4
Final adjustment: .....	5
Caulking:.....	5
Finishing: .....	5
Finish Painting: .....	6



- Attention Required



- Warning



- Leveling is Required



- Warning May Cause Injury



## Greetings/Required Tools

### Dear Customer,

We would like to thank you for choosing a Noise Barriers, LLC QuietSwing™ sound control door(s). Noise Barriers, LLC doors are the highest performing doors in the industry.

Special attention should be given to the proper installation of these doors to ensure the highest field acoustic performance.

To install the door properly please read this manual in its entirety.

We recommend the use of a trained and approved NBL installer.

Thank you,

Noise Barriers, LLC Team

### Required tools:






- Drill
- Impact Driver Drill
- Measuring Tape
- Pencil
- Level
- 5/16" and 3/8" Hex Driver Bit
- Two Ø8" min. Vacuum Suction Cups

### Hardware Included:

- Metal/Wood: Substrate or Jamb
  - Ø1/4" X 2" Hex Head Self-Drilling Screws
- Concrete: Substrate or Jamb
  - Ø1/4" X 2-1/4" Hex Head Tapcon Screw
- Door Plugs
- 4" Fiberfill to wrap frame
- Caulk
- Set of Drawings
- Installation Instructions

## Important Installation Instructions

### WARNING:

1. To reduce the risk of injury carefully read and follow all installation instructions. 
2. Use proper lifting techniques.
3. Use back brace.
4. In order for the door to work properly. The frames must be plumb/leveled. 
5. Pre-Hung Assembly: Each leaf and frame is factory fitted and match marked to insure proper alignment, seals and operation. **Do not mix and match assemblies.** 
6. Sound control doors are extremely heavy, use caution when lifting. Do not lift the door by any installed hardware or you may damage the door and/or hardware. Industrial suction cups may be used for best result when lifting the doors. All doors have rivet-nuts installed in the top of the door for lifting.   


### Receipt:

Prior to signature of the Bill of Lading inspect the exterior of the crates for damage. Noise Barriers LLC recommends opening the crates for additional inspection for hidden damage. Please note all damage on the shipper's bill of lading and require their driver to sign accordingly. If freight damage is extensive and appears to need factory repairs, refuse the shipment and ask that it be returned to Noise Barriers LLC. Please advise our Shipping Department immediately [847-843-0500](tel:847-843-0500) of any freight damage or contact your Project Manager for additional information. An RMA number prior to shipment is required for any returned or damaged items.



### Approval Drawings:

There are two options for installing QuietSwing™ doors. The frame can wrap the wall (Installation option “A”), or the frame can fit between the wall jambs (installation option “B”). Check your approval drawings for installation option (A or B) and verify the correct rough opening dimensions were used to prepare the opening. Refer to figure 1.

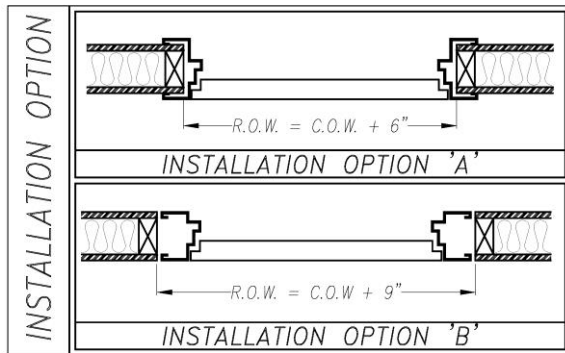


Figure 1

### Uncrating:

Carefully open crate and/or box. Doors are typically standing on edge. Reference your facility architectural drawings to check swing, openings, and quantities. Compare these drawings to your approved submittals for accuracy. If correct remove banding. Open leaf to approx. 120 degrees lift off hinges and set the door leaf aside. Remove plug buttons (if installed) and temporary fasteners and “separate” frame sections. Remove spreader bar. The assembly is now in 3 pieces: leaf, male frame and female frame. If it is a double leaf door, the assembly will be 5 pieces: leaf, left hand male frame, right hand male frame, left hand female frame, right hand male frame. Take inventory of the parts included. All doors are pre hung and adjusted at the factory. We do not send shims. Fasteners will be included for standard installation. Some installations may require specialty

fasteners, but are not provided by NBL. Button plugs are included to fill the frame holes. Other parts may be included for any specialty hardware or options.

### Installation

#### Preparation:

Clear all debris and foreign matter from around the wall opening and floor. Prior to uncrating check rough opening size for height, width, square, smoothness, and wall thickness. Required rough opening measurements can be obtained from your approved submittal drawings. If not in accordance with these requirements do not begin. Contact the Project Manager at Noise Barriers [847-843-0500](tel:847-843-0500) for instructions, prior to installation or modification. The Noise Barriers, LLC door is designed to be installed on top of a smooth finished floor, or threshold. **Rough opening height is determined from the top of threshold or finished floor (Figure 2).** Doors should not be installed to seal against carpet.

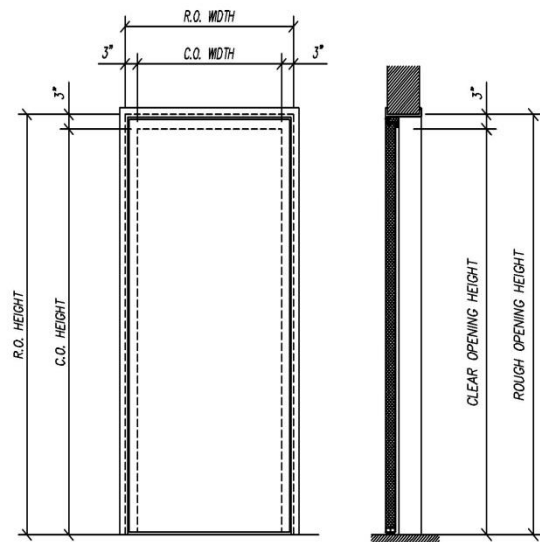


Figure 2



## Installing Frame:

### Step 1:

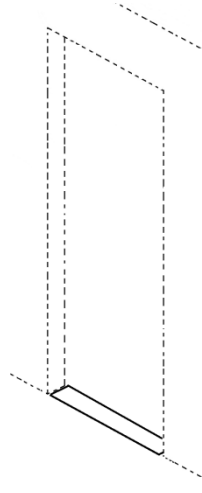
Verify that the floor is smooth and flush, which is acceptable for door installation.

### Step 2:



**Determine if there is a threshold to be used.** If so, center the threshold in the opening.

Once prepared apply acoustical caulk/construction adhesive to the bottom of the threshold and set in place. If the threshold is set over flooring, make sure it is anchored correctly, and can support the door correctly. Apply acoustical caulk or construction adhesive under the threshold if possible.



### Step 3:

Doors can also be installed directly over polished concrete or finished wood surfaces. "For double leaf doors" at this time slide the left hand and right hand female pieces together.

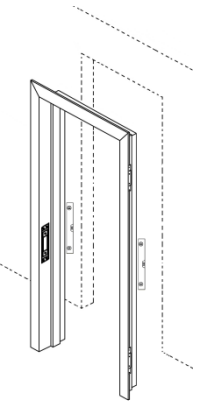


Figure 3

Before installing the jambs, make sure the acoustical fill is in the frame. Plumb and align female section (hinge side) in opening in accordance with tolerances shown (Figure 3). Fasten with one fastener at each hinge, careful not to damage frame (Figure 4). Alignment shims may be required, it is best to shim

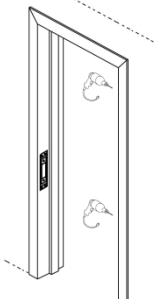
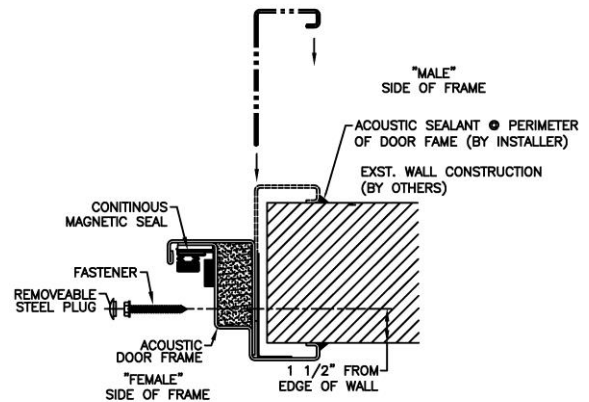


Figure 4

directly behind the hinge pocket, improper installation of shims will interfere with the male frame. Do not install male frame at this time.

### Step 4:

Once the female frame is leveled and installed, install the male Frame. With a double leaf door the "Male" side of frame is in 2pcs. Two screws at head are required.



## Mounting Door:

### Step 1:

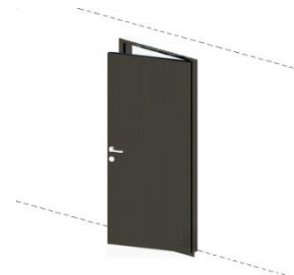
Carefully mount leaf and close.

### Step 2:

Check seal and shim frame if required to obtain a complete seal at head and jambs. Some drilling may be required if self-drilling fasteners cannot be used.

### Step 3:

There is an acoustic fill in the frame fastener pocket; your fastener should anchor tightly to the steel frame behind the insulation.





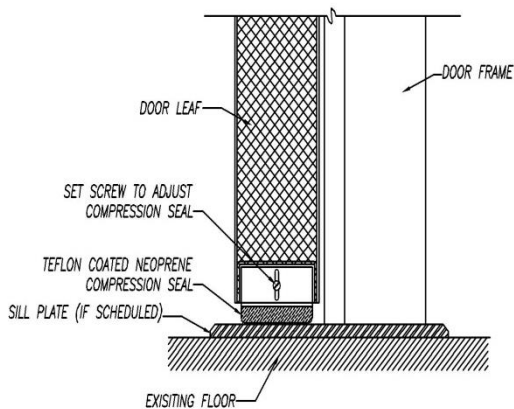
**Note:** The bottom seal is installed and in the retracted position. Special care should be taken to avoid damaging this seal; field damage is not covered by NBL warranty.



**Note:** If the door requires a window. The door will be pre glazed. Unless otherwise specified by the customer.

### Final adjustment:

Adjust bottom seal (Figure 5) by opening leaf and loosening the 2 screws on the doors edge allowing seal to drop down. Lower the seal so it drags across the floor or threshold. The seal should be snug to the floor and may need to compensate for an uneven floor. Open, close door 2 to 3 times. Open & tighten 2 screws. When the seal is properly adjusted expect the seal to drag across the floor for several inches as the door opens. If operation is satisfactory, install plug button and caulk exterior joint where frame meets wall.



Please advise any additional construction personnel and the site superintendent that these doors should not be propped open from the bottom or damage will occur to the bottom seal. **Damage to the bottom seal will not be warrantied.**



On new construction sites we recommend leaving

the bottom seal in the up position until construction is completed and the floor has been swept clean of any debris. The bottom seal can then be lowered into place following the instructions above. We also recommend that if the job site is still under construction, take the door out of the frame and store it in a secure place to avoid damage.

### Caulking:

Paintable caulk should be applied around the frame to seal all air and noise passage. This should be done on both sides of the frame at the point where the frame meets the wall, along the male / female frame joint, and around the threshold.

### Finishing:

Your door can be finish painted according to Noise Barriers Painting Instructions. Please review and follow the painting instructions. Finally demonstrate and instruct the owner on operation and maintenance of the door and the bottom seal system.



## Finish Painting:



**PAINT SELECTION:** Unless otherwise specified, QuiteSwing acoustical door and frame assemblies are shipped with a prime-painted finish and are intended to receive a field-applied paint finish. Check the door submittal sheet to verify factory finish. The door leaf and frame are constructed of steel, so any **Direct to Metal (DTM)** paint will work.



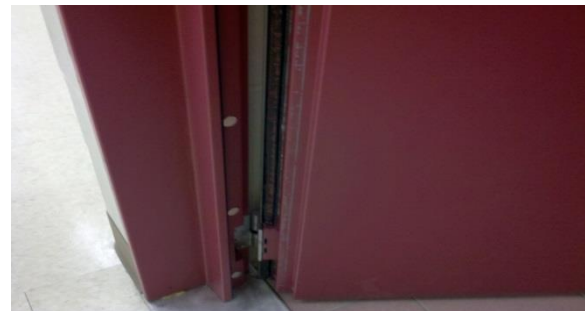
**PLEASE NOTE:** The rubber seals react with some paints. This reaction causes the door to stick closed and may rip the seals out of the door. It also causes significant damage to the paint finish. For this reason, QuiteSwing acoustical doors and frames should only be painted with paints that are “plasticizer resistant”.

Contact your paint supplier for assistance in selecting a paint which meets these requirements.

**PREPARATION:** The rubber head and jamb seals on both the door leaf and the frame must be taped over prior to painting to prevent difficult clean up.

The black plastic button plugs can be painted over to match the paint finish, or removed and reinstalled after the paint is dry.

The door must be held open for the duration of painting and for a minimum of 72 hours after painting to keep the seals from damaging the paint finish. This is absolutely critical as any contact with the seal before the paint dries will damage the finish. In the photo below, you can see the gray prime-paint through the red paint rubbed off on the black rubber seal. This is what happens if the door is closed before the paint fully dries.



It is also important that the doors not be propped open with any wedge or other material under the door leaf. Wedging the door open may lead to the need for adjustment, repair, or even replacement to achieve proper performance.



Following these simple steps will help insure a quality long-lasting finish on your QuiteSwing acoustical doors. Please contact our factory at (847) 843-0500 or [info@noisebarriers.com](mailto:info@noisebarriers.com) with any further questions.