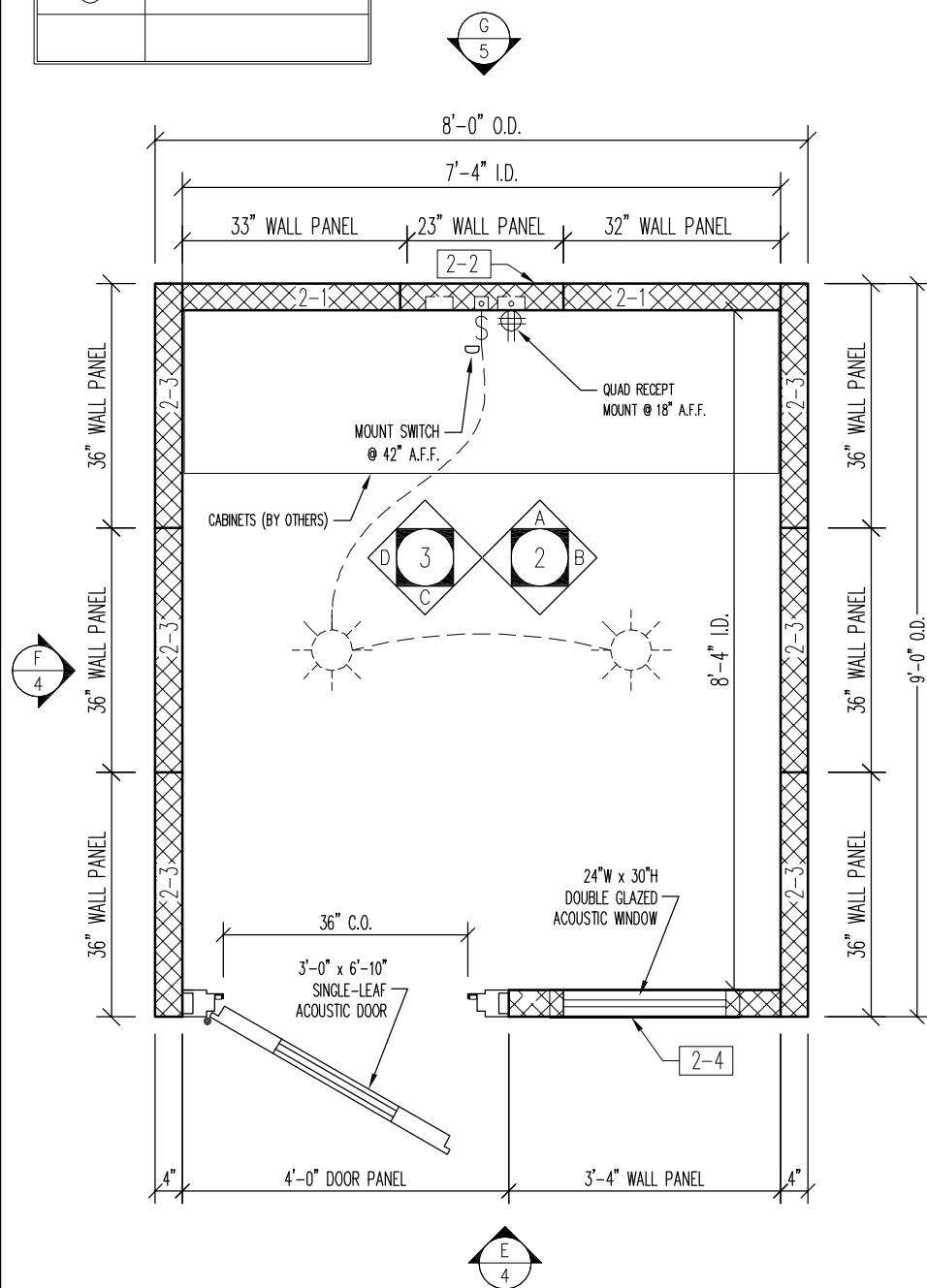
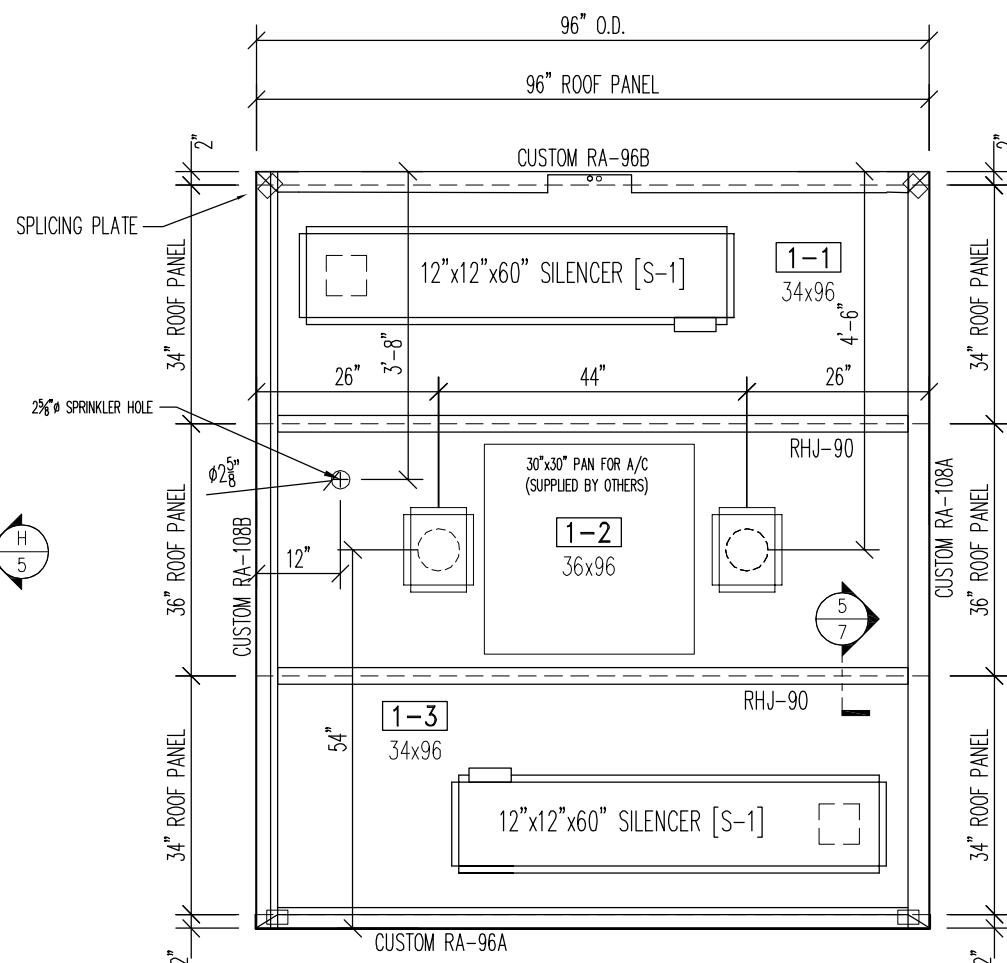


SYMBOLS LEGEND	
	FLUSH MOUNTED SINGLE-POLE DIMMER SWITCH FOR LIGHT (42" A.F.F.)
	FLUSH MOUNTED QUAD RECEPTACLE OUTLET, 20A (18" A.F.F.)
	FLUSH MOUNTED CEILING CANISTER LIGHT
	WALL MOUNTED THERMOSTAT



**NB QT- 8090 FLOOR PLAN**



**NB QT- 8090 ROOF PLAN**

**GENERAL CONSTRUCTION NOTES:**

- DOOR AND PANEL FINISH:**  
POWDER PAINTED IN COLOR SELECTED FROM NOISE BARRIERS STANDARD COLOR CHART. PLEASE SPECIFY COLOR PREFERENCE.  
  - SHERWIN WILLIAMS# 7142 "LUMINOUS WHITE" - TEXTURED
- WALL AND CEILING CONSTRUCTION:** QUIETMOD™ 4" THICK TYPE HARD/PERF ACOUSTIC WALL AND 4" CEILING PANELS AS MANUFACTURED BY NOISE BARRIERS, LLC. PANELS ARE FORMED FROM A60 GALVANNEALED SOLID SHEET METAL ON THE EXTERIOR, PERFORATED FACE ON THE INTERIOR. THE PERFORATED MATERIAL HAS 3/32" DIA. HOLES ON 3/16" STAGGERED CENTERS.
- FLOOR PANEL CONSTRUCTION:** NO FLOOR PANELS SELECTED. CUSTOM COSTCO CARPET W/ PAD.
- ACOUSTIC DOOR:** QUIETSWING™ 2.5" THICK ACOUSTIC DOOR AS MANUFACTURED BY NOISE BARRIERS, LLC. THE ACOUSTIC DOOR IS PROVIDED WITH CAM-LIFT HINGES, DOUBLE MAGNETIC SEALS ON THE JAMB AND HEAD, TEFLON COATED FULLY MORTISED ADJUSTABLE COMPRESSION SEAL AT DOOR SILL, AND PUSH/PULL HANDLES & SCHLAGE B660P DEADBOLT. A 18"x60" DOUBLE GLAZED ACOUSTIC WINDOW IS INCLUDED IN DOOR LEAF STANDARD.
- ACOUSTIC WINDOW:** (1) 24" x 30" DOUBLE GLAZED ACOUSTIC WINDOW INCLUDED.
- VENTILATION:** QUIET AIRFLOW™ SILENCED VENTILATION SYSTEM AS MANUFACTURED BY NOISE BARRIERS, LLC. WITH 6" DUCT COLLAR FOR A/C CONNECTION AND INTAKE + EXHAUST GRILLS.
- ELECTRICAL SYSTEM:** 110V "PLUG AND PLAY" ELECTRICAL SYSTEM IS UL APPROVED. THE ELECTRICAL SYSTEM INCLUDES A NO-HEAT, NO-NOISE CEILING MOUNTED LED DOWNLIGHT WITH DIMMER, VENTILATION SWITCH, AND (1) HOSPITAL GRADE QUAD OUTLET. EMPTY CONDUIT AND DEVICE BOXES ARE BURIED IN WALLS. THE PRE-WIRED PLUG AND PLAY ELECTRICAL DEVICES ARE FACTORY INSTALLED INTO ACOUSTIC PANELS. THE WIRING TERMINATES AT THE ROOF IN STANDARD JUNCTION BOXES AND INCLUDES A 10' POWER CORD TO BE PLUGGED INTO HOST BUILDING ELECTRICAL OUTLET.
- APPROXIMATE WEIGHT:**  
  - WITH ISOLATED FLOOR MAT: 2,800 LBS.
- JACK PANEL:** NO JACK PANEL SELECTED
- GENERAL INSTALLATION NOTES:**  
  - CUSTOMER SHALL PROVIDE A FINISHED SURFACE THAT IS WITHIN 1/4" OF LEVEL IN 10 FT. OVER THE ENTIRE AREA SUPPORTING THE ROOM.
  - PANEL SIZES SHOWN ARE NOMINAL. PANEL SIZES MAY BE UNDERSIZED SLIGHTLY TO ALLOW FOR THICKNESS OF JOINERS, CHANNEL, ETC.
  - INSTALLER IS RESPONSIBLE FOR FOLLOWING PLANNED LAYOUT. CONTACT NOISE BARRIERS, LLC. BEFORE MAKING ANY CHANGES OR ALTERATIONS.
  - INSTALLER IS RESPONSIBLE FOR FIELD CUTTING NOTCHED IN ROOF CHANNEL & ROOF APRON FOR CONDUIT PENETRATIONS.
  - TOTAL EXTERIOR HEIGHT OF AUDIOMETRIC ROOM: 111" OR 9'-3"
  - NOISE BARRIERS TO PROVIDE (1) 2 5/8" HOLE FOR DE-COUPLED SPRINKLER CONNECTION. ALL MATERIALS AND LABOR PERTAINING TO SPRINKLER INSTALLATION BY OTHERS.

**PROPRIETARY**  
THIS DESIGN AND DRAWING IS THE EXCLUSIVE PROPERTY OF NOISE BARRIERS, LLC. AND IS SUBMITTED AS CONFIDENTIAL INFORMATION IN CONNECTION WITH YOUR INQUIRY. IT MUST NOT BE USED FOR ANY OTHER PURPOSES, NOR CAN IT BE COPIED OR LOANED WITHOUT WRITTEN PERMISSION. UPON REQUEST IT MUST BE RETURNED IMMEDIATELY.

REVISIONS	DESCRIPTION	DATE	BY
1			

DESCRIPTION		DATE	BY
QT-8090L - FLOOR / ROOF PLANS <td></td> <td></td>			
CUSTOMER			
COSTCO HEARING AID - QT-8090L			
DRAWN BY	PJM	SCALE	N.T.S.
DATE	7/23/14	SHEET	1 OF 10

**Noise Barriers, LLC**  
2001 Kelley Ct.  
Libertyville, IL 60048  
Phone: (847) 843-0500  
Fax: (847) 843-0501  
www.noisebarriers.com