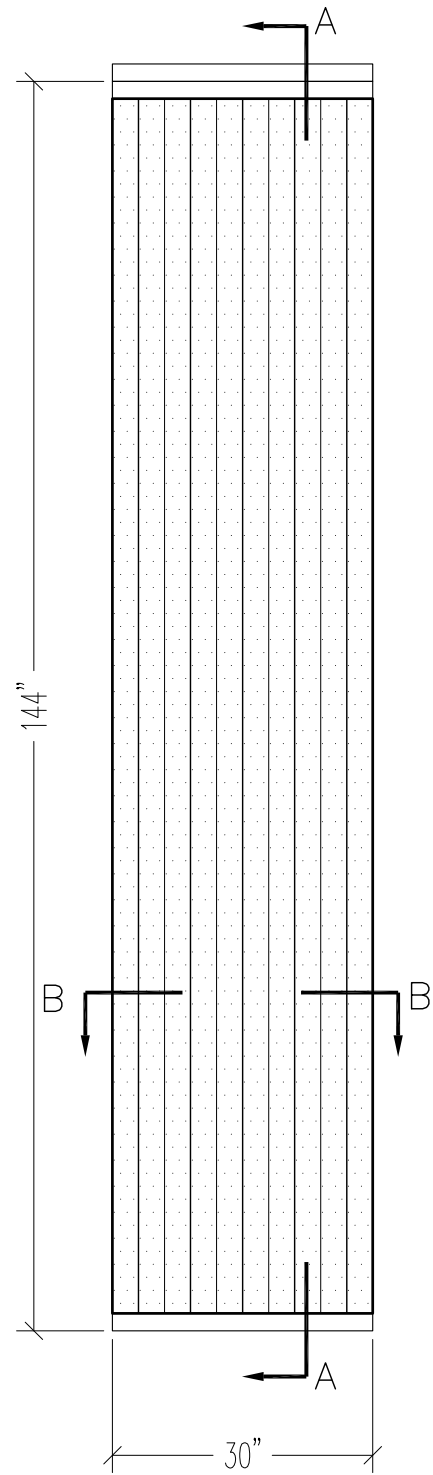
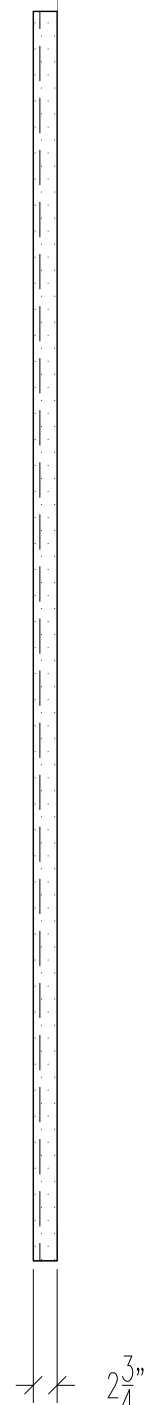


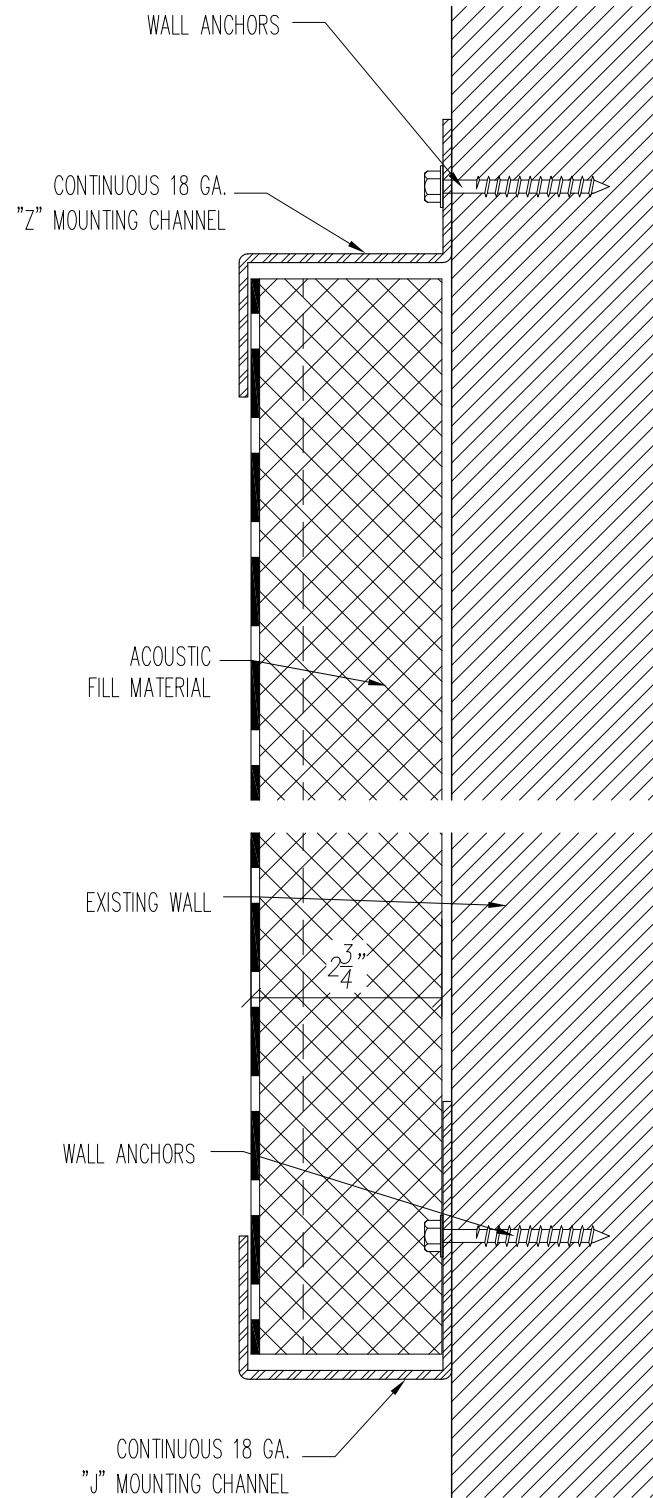
TOP VIEW



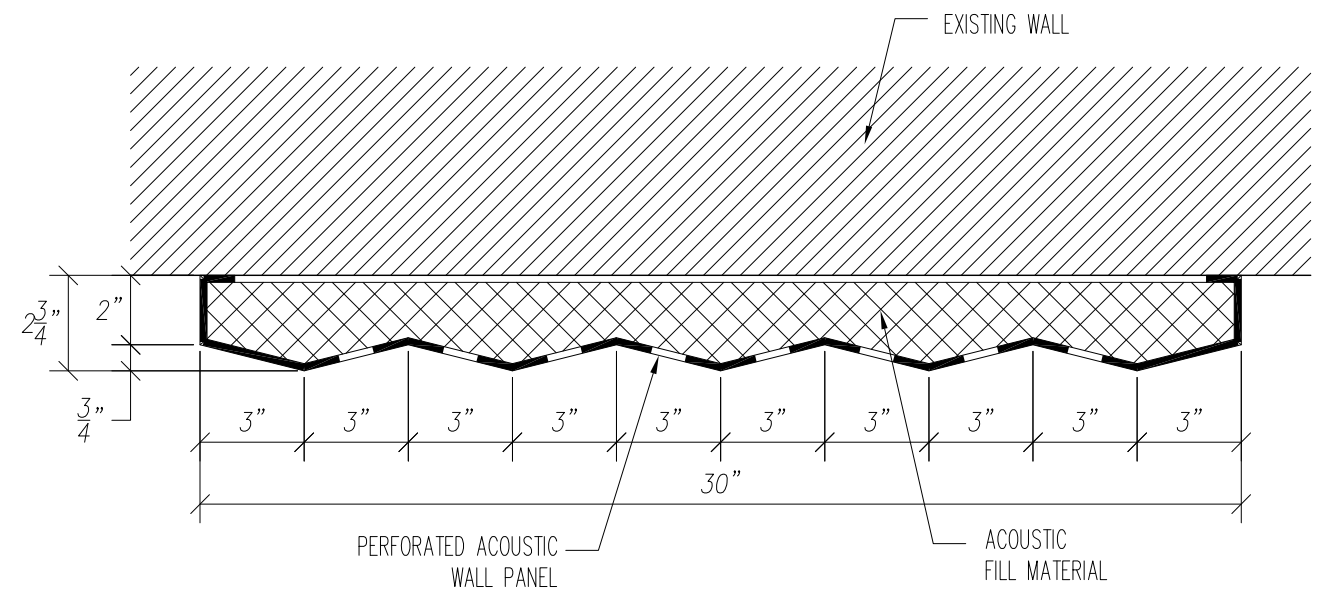
FRONT VIEW



RIGHT SIDE VIEW



SECTION A-A



SECTION B-B

GENERAL NOTES:

- 1.) ABSORPTION PANELS ARE FORMED FROM 22 GA. PERFORATED STEEL WITH $\frac{3}{32}$ " HOLES ON $\frac{3}{16}$ " STAGGERED CENTERS. PANELS HAVE G-90 SPANGLED GALVANIZED COATING IF SUPPLIED UNPAINTED. PANELS THAT ARE SUPPLIED WITH FINISH PAINT ARE FORMED FROM A-60 GLAVANNEALED STEEL.
- 2.) PANEL FILL: IS NON-COMBUSTIBLE, SOUND ABSORBING FIBERGLASS.
- 3.) FINISH: PANELS ARE AVAILABLE WITH A TGIC POLYESTER POWDER COATING OR UNFINISHED G-90 SPANGLED GALVANIZED COATING. STD. PAINT COLOR IS RAL-9003 (STD. WHITE). ADDITIONAL COLORS ARE AVIALABLE AND CAN BE SELECTED BY ARCHITECT/CUSTOMER FROM STANDARD COLOR CHART SUPPLIED BY NOISE BARRIERS, LLC. COLOR TO BE: _____
- 4.) PANELS ARE SUPPLIED WITH CONTINUOUS 18 GA. TOP 'Z'-CHANNEL AND BOTTOM 'J'-CHANNEL FOR MOUNTING PANELS TO EXISTING WALL/CEILING. ANCHORING HARDWARE VARIES BASED ON EXISTING WALL CONSTRUCTION.

SOUND ABSORPTION COEFFICIENTS

OCTAVE BAND CENTER FREQUENCIES (Hz)	125	250	500	1K	2K	4K	NRC
QUITPERF NB-II V-RIDGE	0.26	0.53	1.00	1.03	0.97	1.02	0.90

*All testing conducted by Riverbank Acoustical Laboratories. Sound Absorption Coefficients by the Reverberation Room Method ASTM C-423-02.

PROPRIETARY
THIS DESIGN AND DRAWING IS THE EXCLUSIVE PROPERTY OF NOISE BARRIERS, LLC. AND IS SUBMITTED AS CONFIDENTIAL INFORMATION IN CONNECTION WITH YOUR INQUIRY. IT MUST NOT BE USED FOR ANY OTHER PURPOSES, NOR CAN IT BE COPIED OR LOANED WITHOUT WRITTEN PERMISSION. UPON REQUEST IT MUST BE RETURNED IMMEDIATELY.

REVISIONS	DESCRIPTION	DATE	BY

DESCRIPTION QUITPERF NB-II 'V'-RIDGE ABSORPTION PANELS		
CUSTOMER NOISE BARRIERS		
DRAWN BY -	PROJ. MGR. -	PROJECT NO.
DATE -	SHEET 1 OF X	QUITPERF

NOISE BARRIERS
401 AIRPORT DRIVE
NORTH AURORA, IL 60532
Phone: (847) 843-0500
Fax: (847) 843-0501
www.noisebarriers.com